




# Cultural Heritage and Forest Management

Ryan Hellenbrand, MS, PhD  
Environment and Resources



1. Introduction: A bit about me

2. “German” (Scientific) Forestry?

- A Genealogy of Forestry in the Upper Midwest
- Wisconsin’s Early Forestry

3. Heritage, Narratives of Belonging  
and Forests

- Paul Bunyan
- Indigenous Forestry and Sustainability







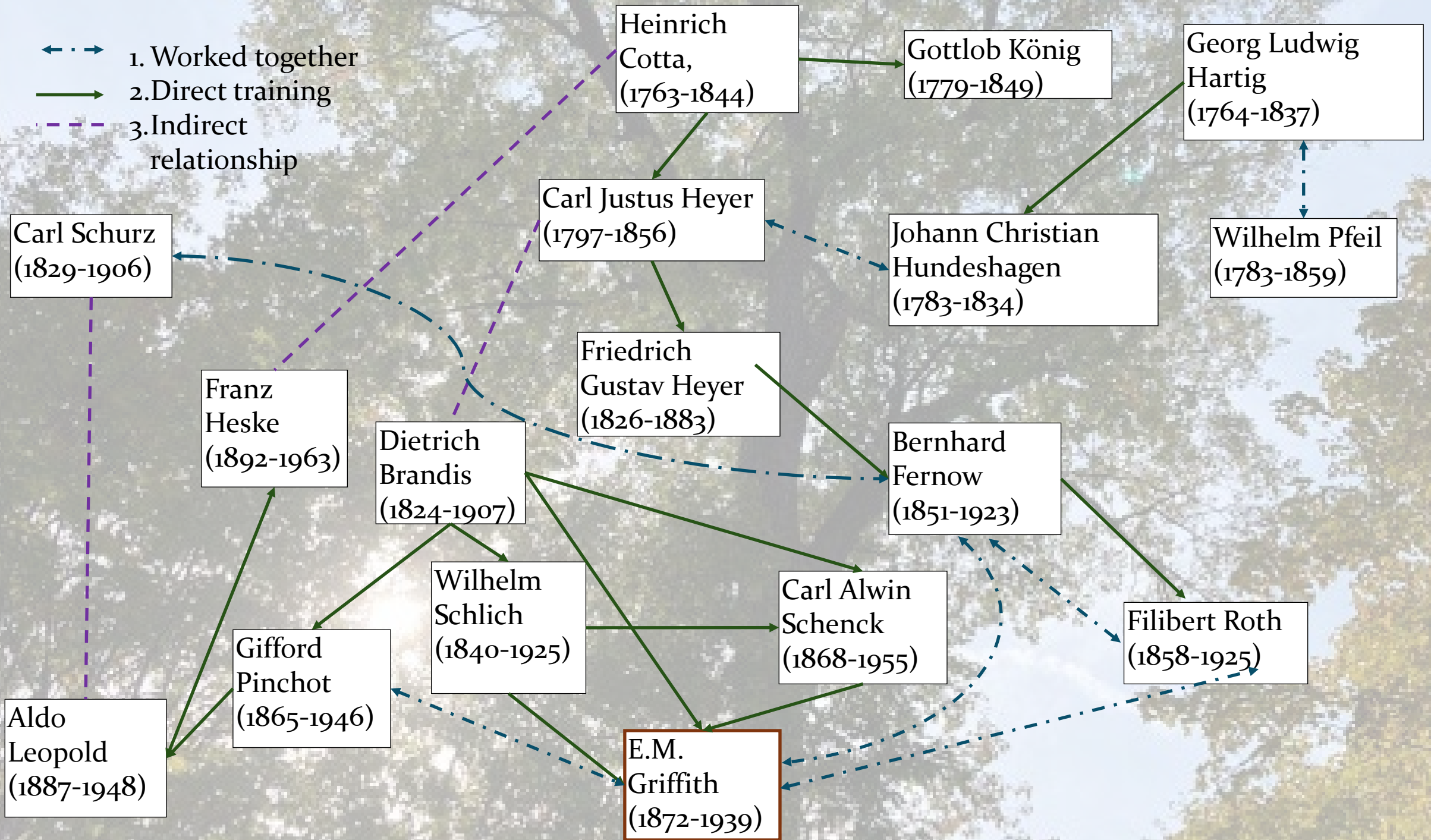


# Menominee Tribal Enterprises



A low-angle photograph looking up at a dense forest canopy. Sunlight filters through the green leaves, creating a bright, hazy glow in the center. The tree trunks and branches are visible against a clear blue sky.

“German” (Scientific) Forestry?





# Wisconsin's Early Forestry

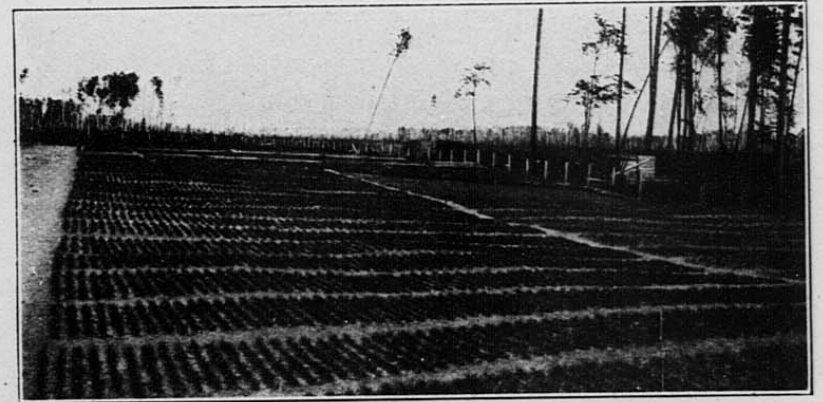
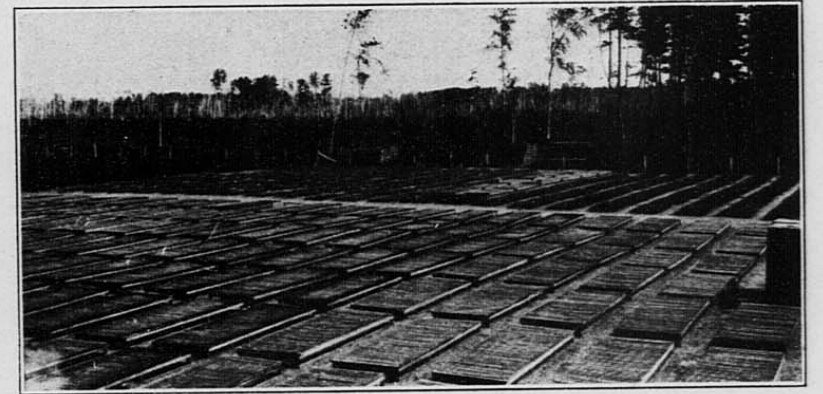
REPORT  
ON THE  
DISASTROUS EFFECTS  
OF THE  
**Destruction of Forest Trees**  
NOW GOING ON SO RAPIDLY IN THE  
STATE OF WISCONSIN.

---

Man has too long forgotten that the earth was given to him for usufruct alone, not  
consumption, still less for profligate waste.—*George P. Marsh, Man and Nature, p. 31*

---

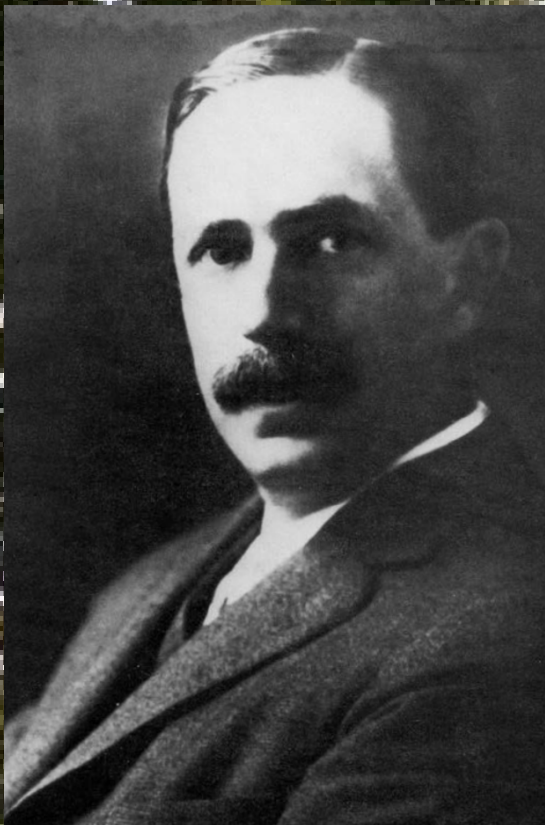
By I. A. LAPHAM, J. G. KNAPP AND H. CROCKER, *Commissioners*



VIEWS OF STATE NURSERY AT TROUT LAKE.

Young pine must be grown in the nursery for two years before being planted.  
About 2,500,000 seedlings are now being grown.

# Making the Case for Forestry



The large German element in our population constitutes a favorable influence for forestry development. Several of the great names in the history of forestry are those of our citizens of German birth or descent. *Dr. Farnow, Univ. Toronto*  
~~Ernst Brunken, now of California~~, and Filibert Roth, now of the University of Michigan, are among these. Carl Schurz, too, has pleaded for forestry development.

## *Policy of The States*

Professor Filibert Roth is the author of some very valuable publications and in his book issued this year on Forest Valuation he says::

"Formerly the policy of country. Usually this policy boomer and other people who h



\* HEADQUARTERS CAMP-STATE BOARD OF FORESTRY  
○ RANGER'S CABIN  
--- FOREST RESERVE LIMITS

MAP OF WISCONSIN FOREST RESERVE.





#### Nana-bushu's Fight with Paul Bunyan

This is a story that is told in the lodges of the Chippewa in the Chippewa National Forest, a forest that Nana-bushu saved from the axes of the wasteful loggers, typified by the notorious Paul Bunyan.

Paul Bunyan who had logged off the eastern states and had finished with Mich. and Wis., and a part of Minn., was cruising in the forests near Red Lake, looking for white pine. It was on the Red Lake Reservation in an area near the southern shores of Lower Red Lake that the wise Nana-bushu met up with the great Paul, who was the toughest fighter of his time.

Nana-bushu told Paul to get going.

The great Bunyan aimed a haymaker at the Indian, thinking he would end the battle quick. Paul got the surprise of his life. The Indian wasn't there. Then Paul got a slap on the mouth with an Ojibway blackhawk (a Red Lake warbler) and a yank on his black whiskers that knocked him off his feet.

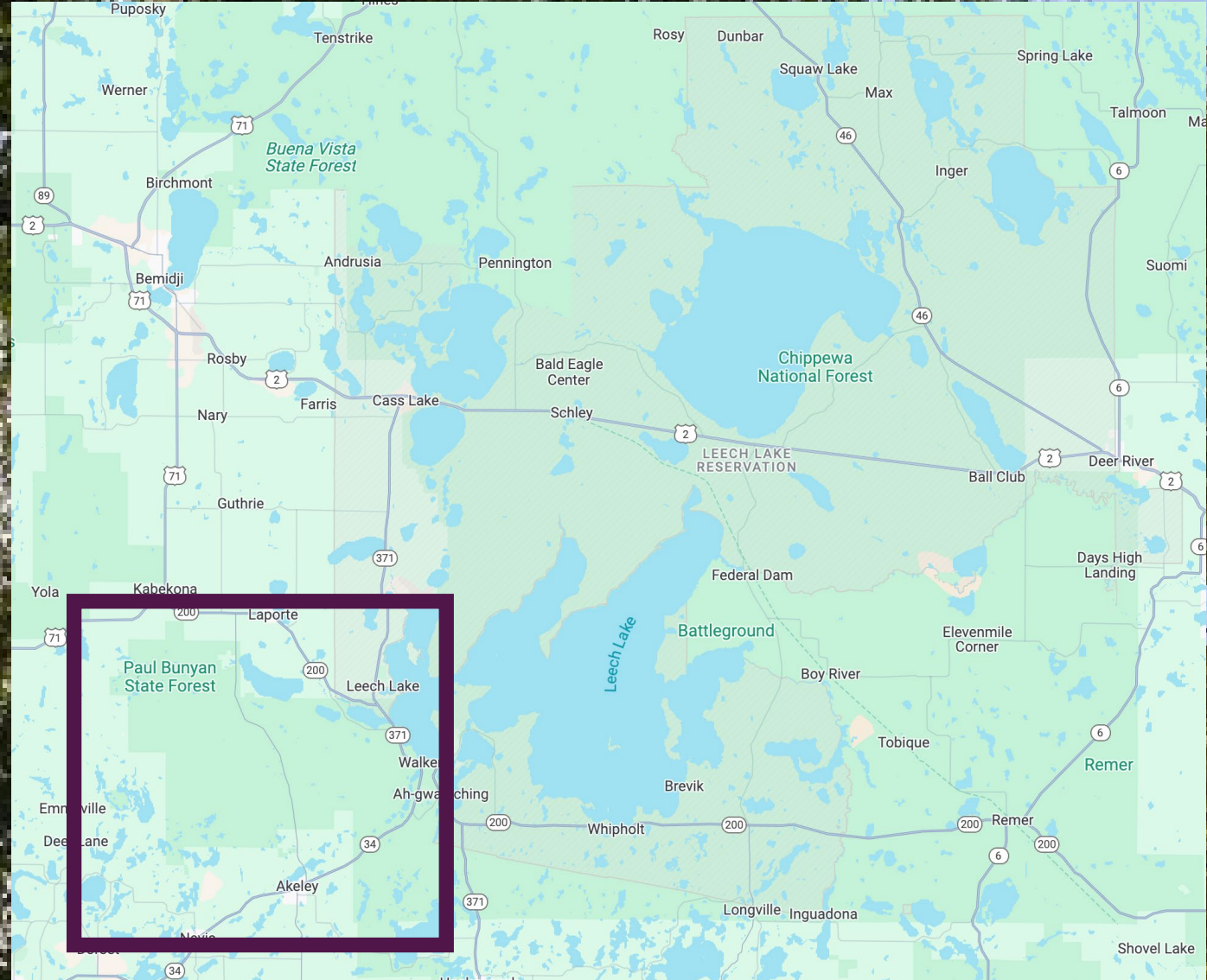
For forty day and forty nights, they fought up and down the forest. The ground was torn up by the two champions.

Paul being blow after blow at the Indian, who dodged every blow, and yanked Paul's whiskers before the fellow could recover his balance.

At last, Paul brought one up from the ground, putting his all into the blow. He missed the Chippewa, and crashing into a giant white pine, he knocked himself out.

Nana-bushu yanked out Paul's whiskers, to make a warbawyer. Then he made the great Paul promise that he would never set foot in the Chippewa forest, except on "a sustained yield" basis, and to look west for his clear cutting.

To bind the bargain, a statue of Paul was erected on the shore of Lake Bemidji showing Paul, without his whiskers, and looking wistfully westward.





# Menominee Forestry

**“Start with the rising sun and work toward the setting sun, but take only the mature Kiskahakituaq enes yoh skimohkahah anokiwen yom skinik enakah, tapehnen kesekew trees, the sick trees, and the trees that have fallen. When you reach Metekok, wehsekesewak metekok, mesek kayes-papeciwak metekok. Kaniw ehpeh,s The end of reservation, turn and cut from the setting sun to the rising sun Piyahtaeyaek enes, Kiskahakituaq enes yoh skinik enakah yom skimohkahah enahkah And the trees will last forever”**  
Mesek metekok yom kakekaehkamet”.

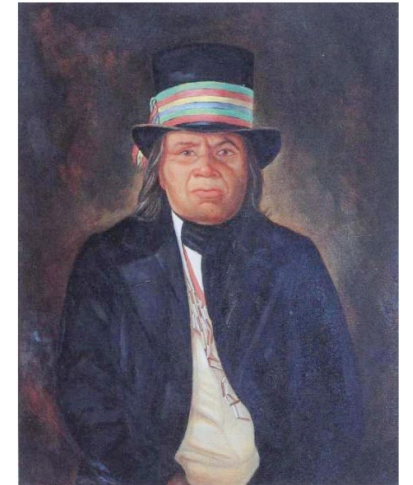
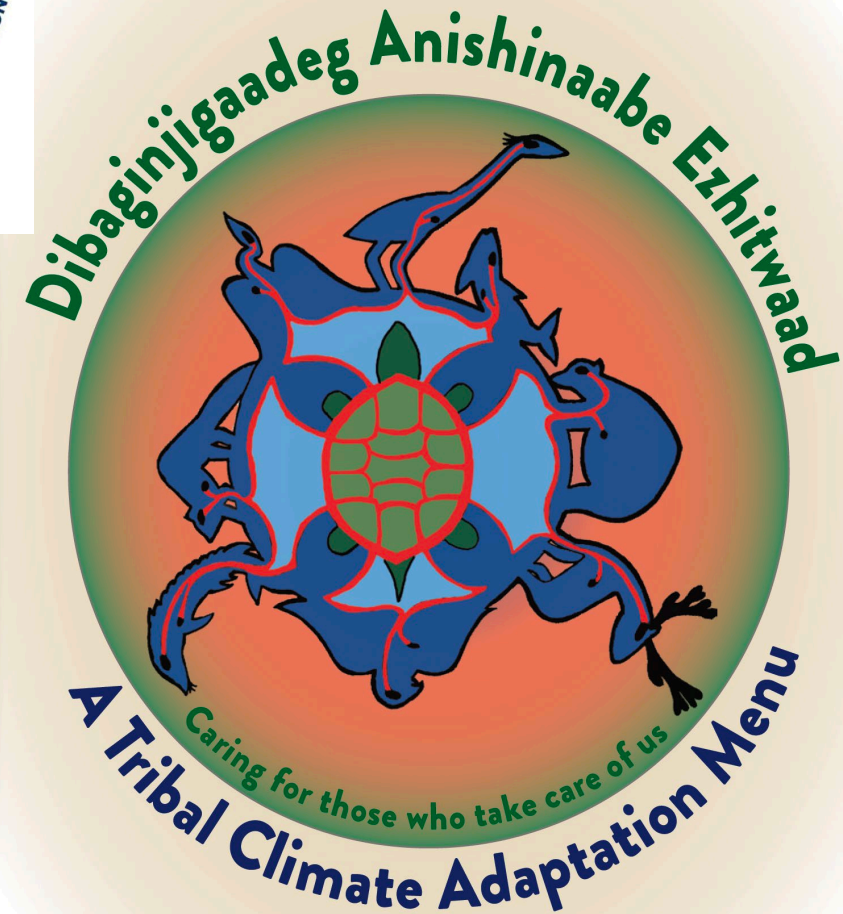


Figure 8.2 Chief Oshkosh “the Claw”



# Indigenous Sustainability



A low-angle photograph looking up at a large, leafy tree against a bright blue sky. The sun is shining from the left, creating a strong lens flare and illuminating the scene. The tree's trunk and branches are dark, while the leaves are a vibrant green. The overall mood is peaceful and natural.

Thank you!